

# HOTHAM

Mt Hotham Alpine Resort  
PO Box 188 Bright 3741 Victoria Australia  
Phone 03 5759 3550

Email [info.mthotham@alpineresorts.vic.gov.au](mailto:info.mthotham@alpineresorts.vic.gov.au) - Website <https://rmb.mthotham.com.au>

## Emergencies. Reporting a Gas Leak.

### What to do when there is a gas leak or an emergency.

**Gas Supply Authority at Mt. Hotham: Mt. Hotham Resort Management.**

**Phone number 24 hours/ 365 Days a year: (03) 5759 3550.**

**FIRE - AMBULANCE - POLICE - Call 000.**

If there is a fire or persons have been injured call 000.

If you smell gas in the open, around your property, or inside your property, you should immediately report this by calling the Mt Hotham Resort Management Board on (03) 57 593 550. You can call this number at any time.

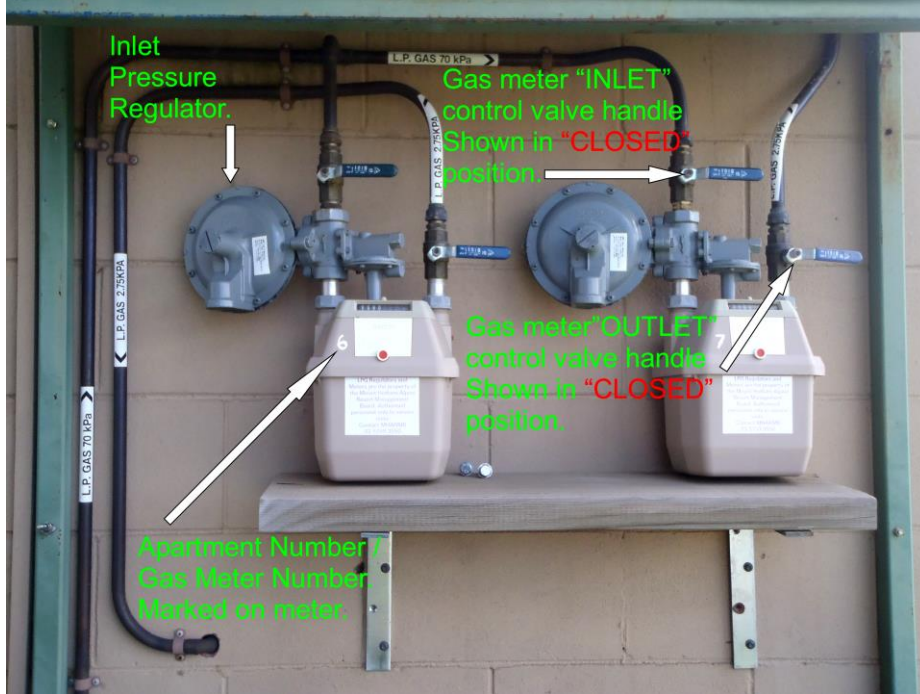
If the call is outside normal office hours, you will be given an after-hours emergency contact mobile phone number.

- If you believe there is a gas leak, or you notice a strong smell of gas inside or around your property, you should ensure persons in or around your property are moved to a safe area away from the area where you believe the leak may be.  
L.P. Gas has a strong odorant added to it, so the smell will be stronger closer to the leak.
- Turn off or remove any source of ignition such as naked flames, cigarettes, gas appliances, pilot lights, electrical equipment.
- If safe to do so, turn off the gas supply at the gas meter.
- Turn the control tap at the gas meter to the closed position. *When handle is in line with pipe it is OPEN. When handle is across pipe it is CLOSED.*
- If you are unable to turn off the gas supply or are not confident about doing this, please wait for Mt. Hotham Resort Management or Emergency Service personnel to arrive.
- If the gas has ignited, keep yourself and others clear. DO NOT attempt to extinguish the flame yourself.

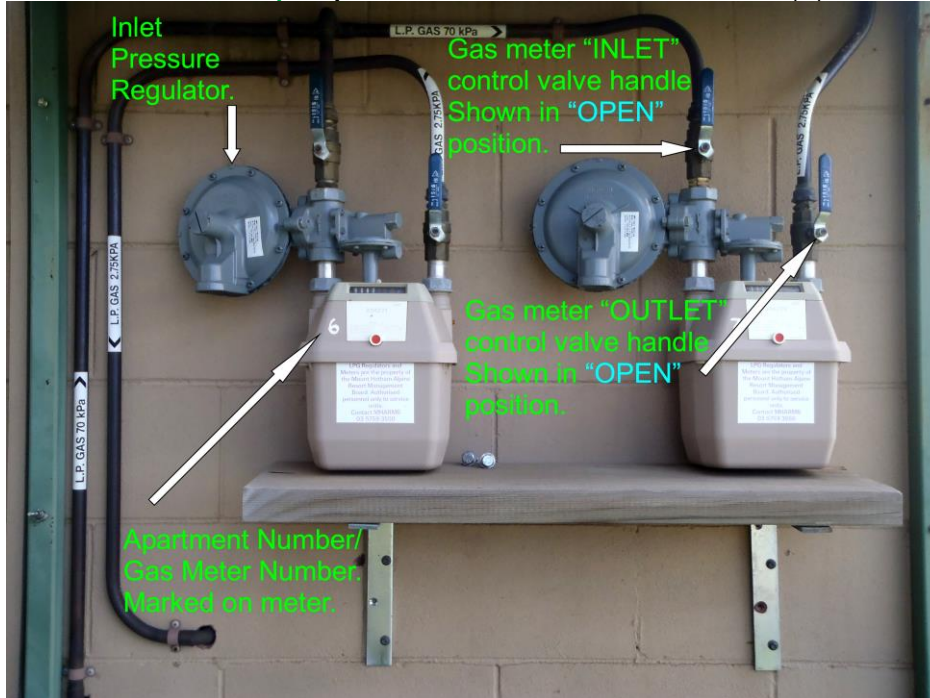
TRUST YOUR SENSES – ITS BETTER TO BE SAFE THAN SORRY – REMEMBER SAFETY FIRST

# HOTHAM

Gas meter control valve in **closed** position: When handle is across pipe it is CLOSED.



Gas meter control valve in **open** position: When handle is in line with pipe it is OPEN.



**HOTHAM**